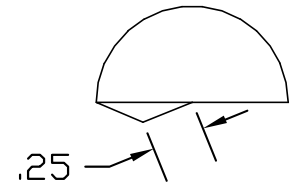
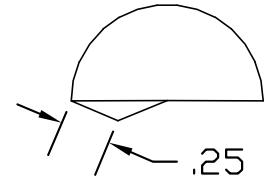
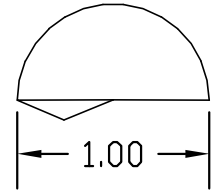
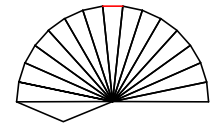
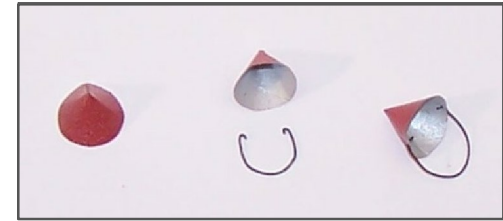


1. CUT OUT SHAPES IN THE LOWER RIGHT.
2. PRACTICE BENDING DEVELOPED BUCKET AS SHOWN ON TOP.
3. PUT A SMALL DAB OF WHITE GLUE ON BUCKET TAB.
4. PAINT INSIDE OF BUCKET SILVER.
5. TURN UPSIDE DOWN AND PAINT OUTSIDE OF BUCKET RED.
6. BEND .020 WIRE AT .5" RADIUS FOR A HANDLE.
7. BEND HANDLE .06" TABS 90° INWARDS.
8. PUNCH HOLES INTO BUCKET WITH A NEEDLE FOR HANDLE.
9. PUT HANDLE TABS IN HOLES AND CRIMP OVER.
10. PLACE FIRE BUCKET ON TOP OF A FIRE BARREL.



TAB



CROWELL LUMBER INDUSTRIES

